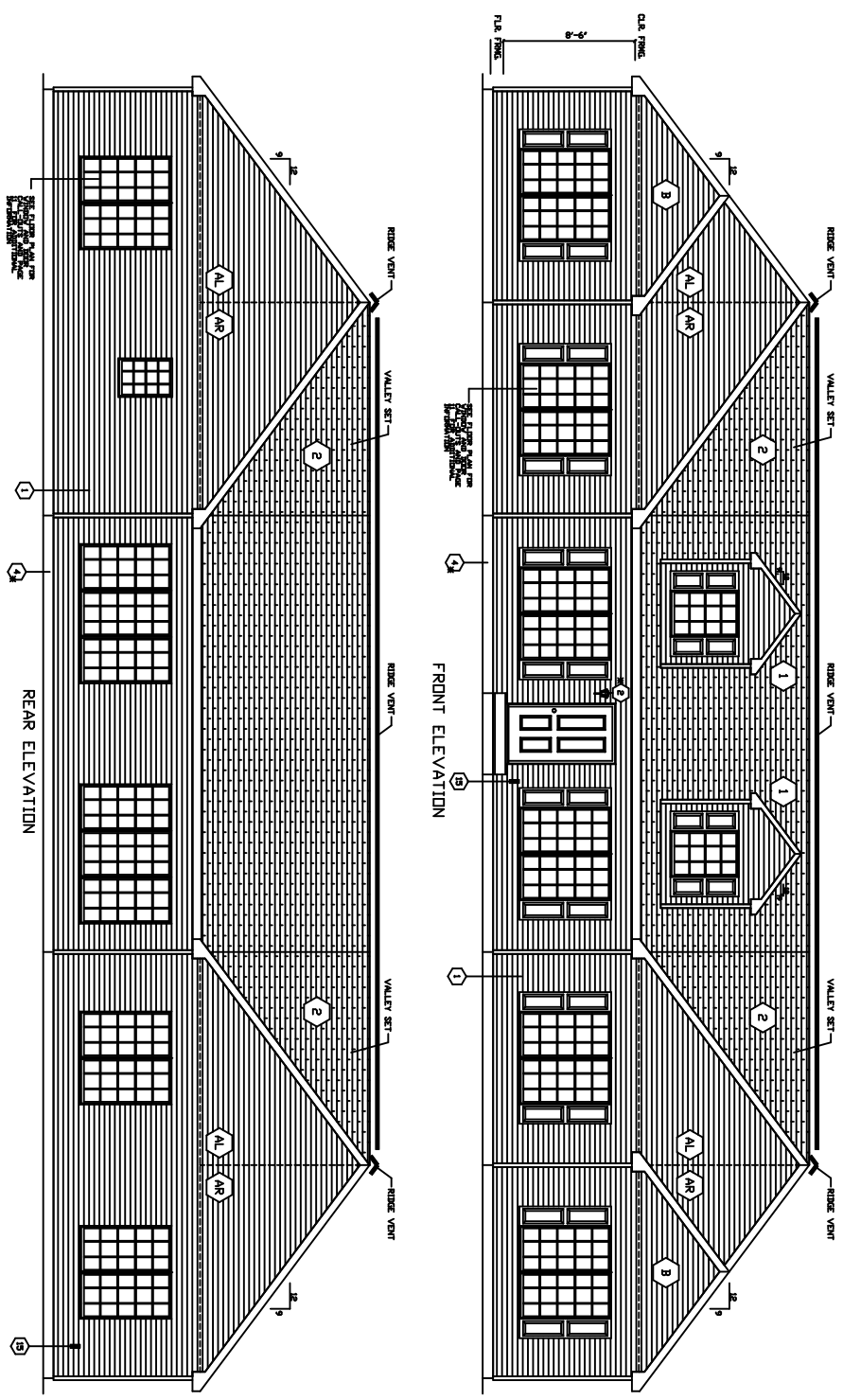


THESE PLANS HAVE BEEN CONSIDERED FROM APPROVED  
 BUILDING SYSTEMS LISTED WITH THE STATE  
 NO CERTIFICATION FOR MODULARS  
 THE FOLLOWING ELEMENTS OF CERTIFICATION FOR EACH HOME ARE AS FOLLOWS:  
 1. FOUNDATION: PER APPROVED BUILDING SYSTEMS LISTED WITH THE STATE  
 2. EXTERIOR WALLS: PER APPROVED BUILDING SYSTEMS LISTED WITH THE STATE  
 3. EXTERIOR ROOFING: PER APPROVED BUILDING SYSTEMS LISTED WITH THE STATE  
 4. INTERIOR WALLS: PER APPROVED BUILDING SYSTEMS LISTED WITH THE STATE  
 5. INTERIOR FLOORING: PER APPROVED BUILDING SYSTEMS LISTED WITH THE STATE  
 6. INTERIOR CEILING: PER APPROVED BUILDING SYSTEMS LISTED WITH THE STATE  
 7. INTERIOR PARTITION WALLS: PER APPROVED BUILDING SYSTEMS LISTED WITH THE STATE  
 8. INTERIOR DOORS: PER APPROVED BUILDING SYSTEMS LISTED WITH THE STATE  
 9. INTERIOR WINDOWS: PER APPROVED BUILDING SYSTEMS LISTED WITH THE STATE  
 10. INTERIOR FINISHES: PER APPROVED BUILDING SYSTEMS LISTED WITH THE STATE  
 11. MECHANICAL SYSTEMS: PER APPROVED BUILDING SYSTEMS LISTED WITH THE STATE  
 12. ELECTRICAL SYSTEMS: PER APPROVED BUILDING SYSTEMS LISTED WITH THE STATE  
 13. PLUMBING SYSTEMS: PER APPROVED BUILDING SYSTEMS LISTED WITH THE STATE  
 14. HEATING SYSTEMS: PER APPROVED BUILDING SYSTEMS LISTED WITH THE STATE  
 15. COOLING SYSTEMS: PER APPROVED BUILDING SYSTEMS LISTED WITH THE STATE  
 16. INSULATION: PER APPROVED BUILDING SYSTEMS LISTED WITH THE STATE  
 17. VENTILATION: PER APPROVED BUILDING SYSTEMS LISTED WITH THE STATE  
 18. STAIRS: PER APPROVED BUILDING SYSTEMS LISTED WITH THE STATE  
 19. BATHS: PER APPROVED BUILDING SYSTEMS LISTED WITH THE STATE  
 20. KITCHENS: PER APPROVED BUILDING SYSTEMS LISTED WITH THE STATE  
 21. LIVING AREAS: PER APPROVED BUILDING SYSTEMS LISTED WITH THE STATE  
 22. BEDROOMS: PER APPROVED BUILDING SYSTEMS LISTED WITH THE STATE  
 23. HALLWAYS: PER APPROVED BUILDING SYSTEMS LISTED WITH THE STATE  
 24. CLOSETS: PER APPROVED BUILDING SYSTEMS LISTED WITH THE STATE  
 25. PORCHES: PER APPROVED BUILDING SYSTEMS LISTED WITH THE STATE  
 26. PATIOS: PER APPROVED BUILDING SYSTEMS LISTED WITH THE STATE  
 27. DECKS: PER APPROVED BUILDING SYSTEMS LISTED WITH THE STATE  
 28. GARAGES: PER APPROVED BUILDING SYSTEMS LISTED WITH THE STATE  
 29. ATTIC: PER APPROVED BUILDING SYSTEMS LISTED WITH THE STATE  
 30. BASEMENTS: PER APPROVED BUILDING SYSTEMS LISTED WITH THE STATE  
 31. OTHER: PER APPROVED BUILDING SYSTEMS LISTED WITH THE STATE

- NOTES:
1. SCHED. ROOMS IS 4' OTHER ROOMS IS AVAILABLE
  2. EXTERIOR WALLS TO BE SHIPPED LONG FOR ON-SITE INSTALLATION BY
  3. SCHED. FOR EGGS AND BOTTOM ROW IS SHIPPED LONG FOR ON-SITE
  4. MATERIALS, STUDS, STAINS, GUTTERS, MANHOLETS, AND BRASSY BUCKS ARE CORRS
  5. ALL EXTERIOR ROOF SIDING WITH A 1/2" GAP WITH VENT SYSTEMS
  6. EXTERIOR WALLS TO BE SHIPPED WITH THE ROOF SYSTEMS
  7. STAIRS TO BE SHIPPED WITH THE ROOF SYSTEMS
  8. ROOF SYSTEMS TO BE SHIPPED WITH THE ROOF SYSTEMS
  9. ROOF SYSTEMS TO BE SHIPPED WITH THE ROOF SYSTEMS
  10. ROOF SYSTEMS TO BE SHIPPED WITH THE ROOF SYSTEMS
  11. ROOF SYSTEMS TO BE SHIPPED WITH THE ROOF SYSTEMS
  12. TERMINATION HEIGHT OF METAL CORNERS WILL BE AT A MIN. 3'-0" ABOVE THE
  13. ROOF SYSTEMS TO BE SHIPPED WITH THE ROOF SYSTEMS
  14. ROOF SYSTEMS TO BE SHIPPED WITH THE ROOF SYSTEMS
  15. ROOF SYSTEMS TO BE SHIPPED WITH THE ROOF SYSTEMS
  16. ROOF SYSTEMS TO BE SHIPPED WITH THE ROOF SYSTEMS
  17. ALL DOWN AND VAULT VENTS SHALL TERMINATE A MIN. 12" ABOVE THE ROOF



NOTE: ACTUAL HOUSE MAY VARY FROM ELEVATION

SN-8955/QN-12945/NC

**THE PEAK OF PERFECTION**  
**APEX HOMES, INC.**  
 247 US HIGHWAY 622 NORTH  
 MIDDLEBURG, PA 17042  
 PHONE: (610) 887-2333

STAGE	DATE	DRAWN BY
PRELIM.	6/23/05	KB
REV. PRELIM.		
REV. PRELIM.		
FINAL.	7/19/05	KB
REV. FINAL.	8/18/05	KB
REV. FINAL.		
PURCHASING	26 SEP 05	KLN
PRODUCTION	11/9/05	WJT

TORE HOME INC/FAMILY CARE HOME					
HOUSE LOCATION:	SEISMIC DESIGN CATEGORY:				
BREVARD, NC 28712 TRANSYLVANIA COUNTY	C				
1557/1556/2828/1556/1558 CUSTOM T-RANCH FRONT/REAR ELEVATIONS					
SNOW ZONE: 20 LB	WIND ZONE: 90 MPH (3 SEC)	WIND LOAD: 21 PSF	SCALE: 1/4"=1'-0"	LAYER: FRONT	FILE NO: A12945